



Stewart Place, Station Road, Ware SG12 9UN

Guide price £259,995



2



1

Taylor Phelps

Estate Agency



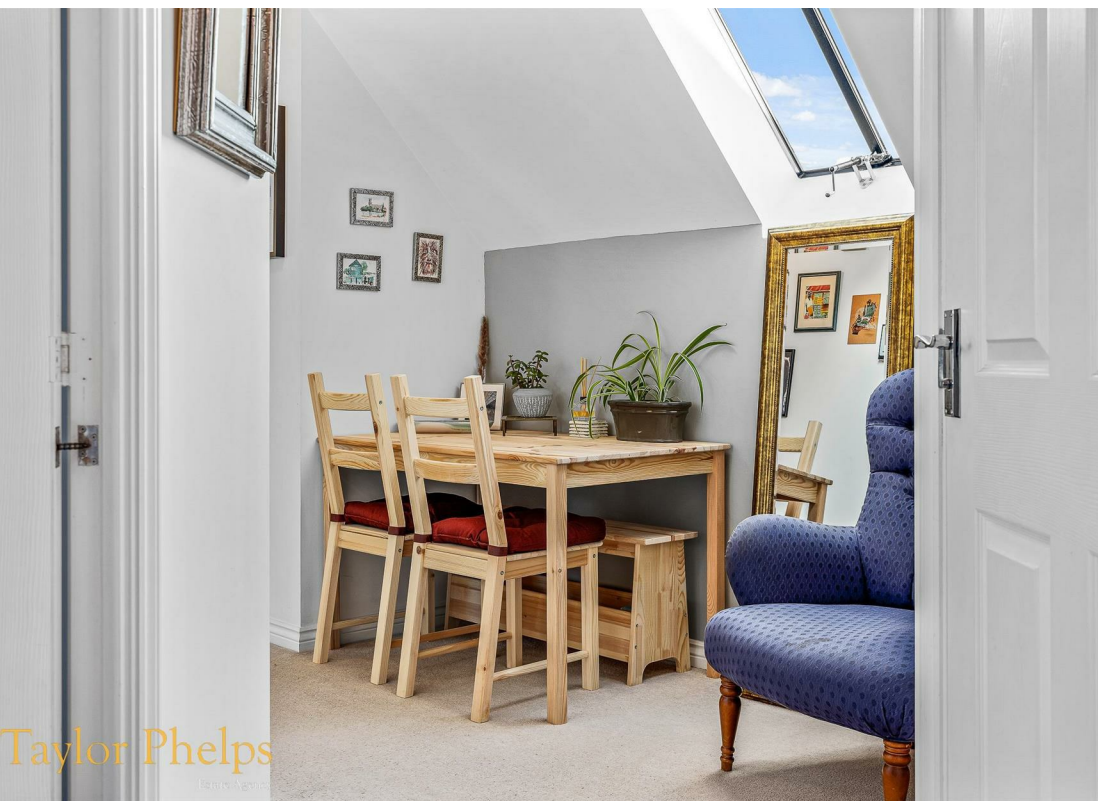
Taylor Phelps are pleased to offer this spacious two bedroom apartment positioned within this modern development in Ware town centre close to the station which serves both Hertford East and London Liverpool Street! This apartment benefits from a long lease and is located on the top floor. Stewart Place has courtyard gardens with seating areas, a lift to all floors in the section and private residents parking!









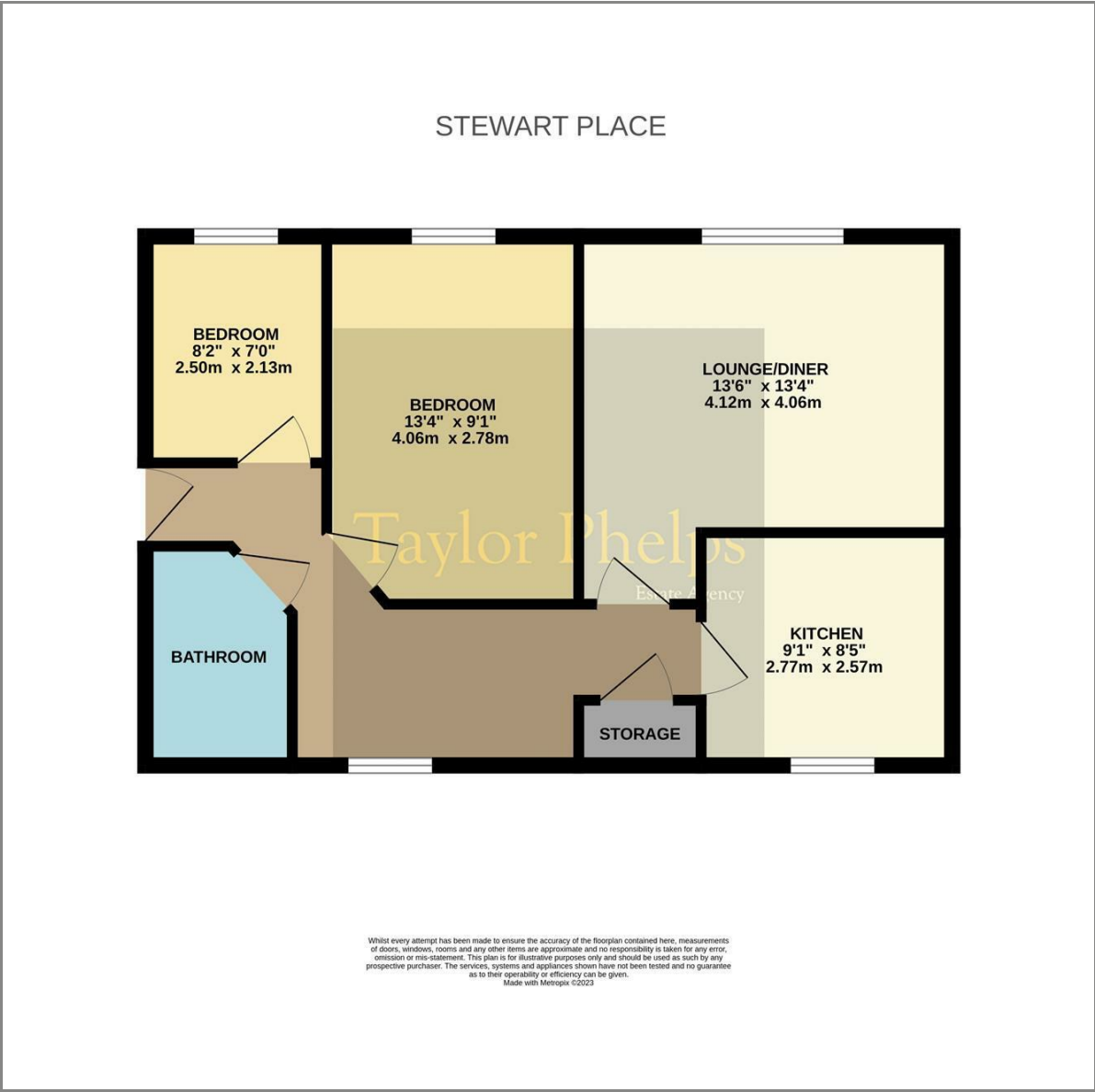






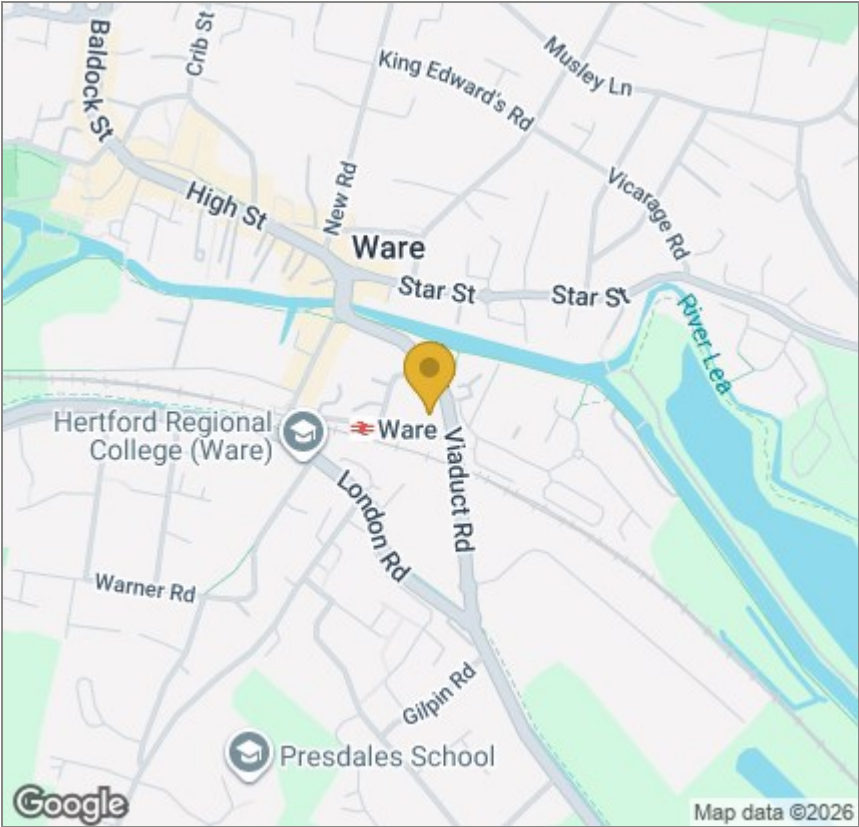


Floor Plan



These particulars, whilst believed to be accurate are set out as a general outline only for guidance and do not constitute any part of an offer or contract. Intending purchasers should not rely on them as statements of representation of fact, but must satisfy themselves by inspection or otherwise as to their accuracy. No person in this firms employment has the authority to make or give any representation or warranty in respect of the property.

Area Map



Energy Efficiency Graph

